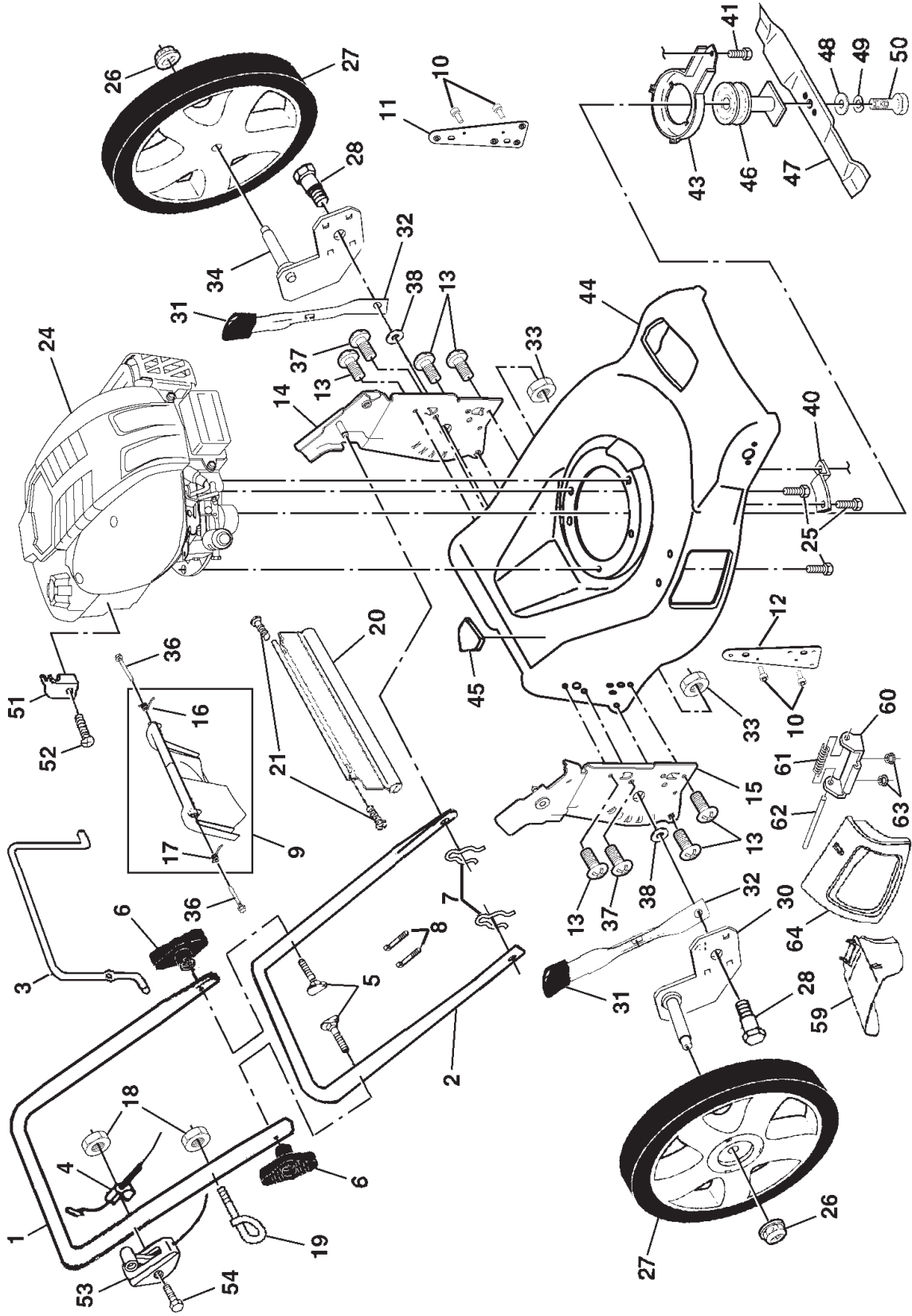


ROTARY LAWN MOWER -- MODEL NUMBER PR7Y21CHB

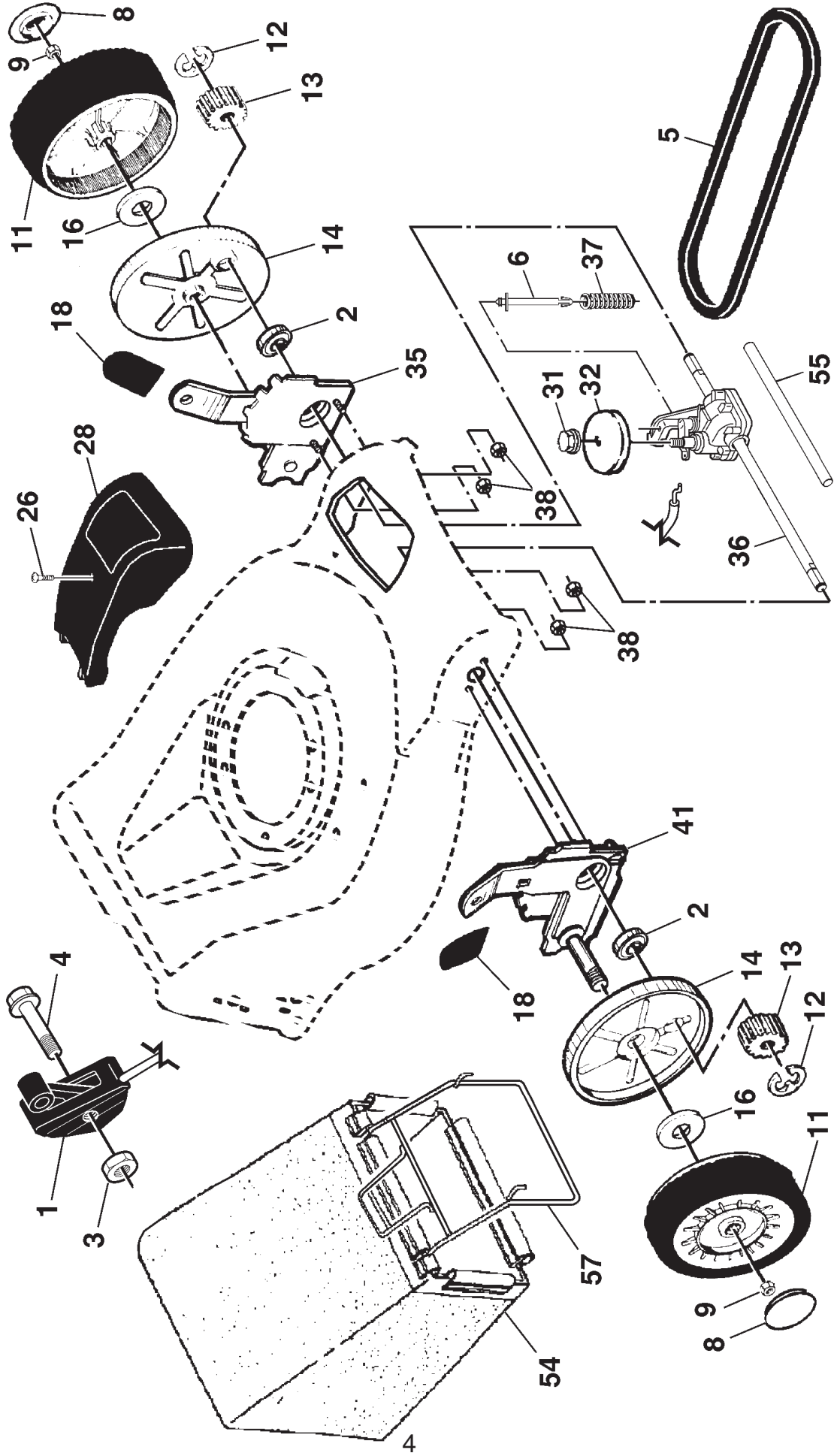


## ROTARY LAWN MOWER - - MODEL NUMBER PR7Y21CHB

KEY NO.	PART NO.	DESCRIPTION	KEY NO.	PART NO.	DESCRIPTION
1	166860X479	Upper Handle	33	73800500	Nut, Hex 5/16-18
2	151721X479	Lower Handle	34	180412X004	Axle Arm Assembly, LR
3	146771	Control Bar	36	184193	Bolt
4	133107	Engine Zone Control Cable	37	150078	Thread Cutting Screw w/Sems 5/16-18 x 3/4
5	191574	Handle Bolt	38	183901	Washer
6	189713X428	Handle Knob	40	188839X004	Mounting Bracket, Debris Shield
7	51793	Hairpin Cotter	41	188040	Screw
8	66426	Wire Tie	43	188784	Debris Shield
9	180479	Rear Door Kit (Includes Key Numbers 16 and 17)	44	176710	Kit, Housing (Includes Key Numbers 10, 11, 12 and 45)
10	128415	Pop Rivet	45	107339X	Danger Decal
11	175069X479	Support Bracket, LH	46	189179	Blade Adapter / Pulley
12	175070X479	Support Bracket, RH	47	189028	Blade, 21"
13	17060410	Screw 1/4-20 x 5/8	48	851074	Hardened Washer
14	175576X479	Handle Bracket Assembly, LH	49	850263	Helical Washer 3/8-24 x 1-3/8 Grade 8
15	175577X479	Handle Bracket Assembly, RH	50	851084	Hex Head Machine Screw 3/8-24 x 1-3/8 Grade 8
16	180071	Spring, Rear Door, LH	51	111190X	Clamp, Cable
17	180072	Spring, Rear Door, RH	52	83816	Screw, Cable Clamp
18	132004	Keps Locknut 1/4-20	53	174221	Throttle Control
19	179585	Rope Guide	54	183365	Screw
20	189005	Rear Skirt	59	175071	Discharge Deflector
21	88652	Hinge Screw 1/4-20 x 1-1/4	60	175735	Hinge Bracket Assembly
24	- - -	Engine, Briggs & Stratton, Model Number 12H602 (For engine service and replacement parts, call Briggs & Stratton at 1-800-233-3723)	61	175285	Spring
25	150406	Hex Head Thread Rolling Screw 3/8-16 x 1-1/8	62	175650	Rod, Hinge
26	83923	Hex Flange Nut	63	73800400	Nut, Hex
27	181383	Wheel	64	175066	Mulcher Door
28	160828	Shoulder Bolt 5/16-18 x .33	- -	162300	Warning Decal (not shown)
30	180411X004	Axle Arm Assembly, RR	- -	172787	Operator's Manual, English
31	175478	Selector Knob	- -	172788	Operator's Manual, French
32	175053X004	Selector Spring	- -	192369	Repair Parts Manual, English / French

**NOTE:** All component dimensions given in U.S. inches.  
1 inch = 25.4 mm

ROTARY LAWN MOWER -- MODEL NUMBER PR7Y21CHB



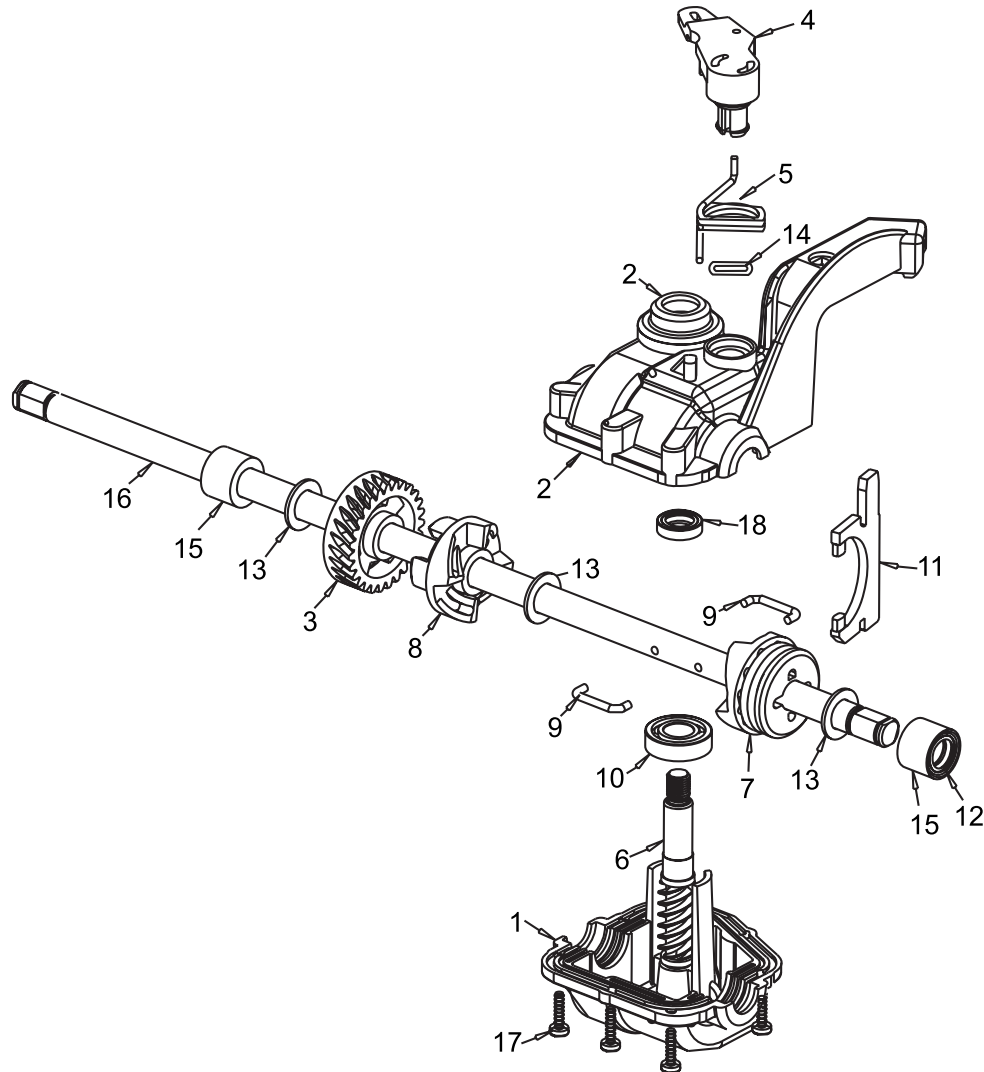
# ROTARY LAWN MOWER - - MODEL NUMBER PR7Y21CHB

KEY NO.	PART NO.	DESCRIPTION	KEY NO.	PART NO.	DESCRIPTION
1	184587	Control Cable Assembly	28	180329	Drive Cover
2	167387	Bearing, Wheel Adjuster	31	132010	Hex Flange Nut
3	<b>191730</b>	Locknut #10-24	32	189407	Drive Pulley
4	158755	Hex Washer Head Screw 1/4-20 x 2.12	35	172291	Kit, Wheel Adjuster, LH
5	175436	V-Belt			(Includes Knob and Bearing)
6	150495	Spring Retainer	36	180184	Gear Case Assembly (See Breakdown)
8	77400	Hubcap	37	137090	Spring
9	145212	Locknut	38	73800400	Locknut 1/4-20
11	180766	Wheel & Tire Assembly	41	172290	Kit, Wheel Adjuster, RH
12	12000058	E-Ring			(Includes Knob and Bearing)
13	137054	Pinion	54	188985	Grassbag Assembly
14	<b>189403</b>	Dust Cover	55	175739	Driveshaft Cover
16	67725	Washer 1/2 x 1-1/2 x .134	57	188815	Frame, Grassbag
18	170143	Selector Knob			
26	175262	Pan Head Tapping Screw #10-24 x 2-3/4			

**NOTE:** All component dimensions given in U.S. inches.  
1 inch = 25.4 mm

**ROTARY LAWN MOWER - - MODEL NUMBER PR7Y21CHB  
GEARCASE ASSEMBLY - - PART NUMBER 180184**

**TONDEUSE À GAZON ROTATIVE - - NUMÉRO DE MODÈLE PR7Y21CHB  
ENSEMBLE DE LA BOÎTE DE VITESSE - NUMÉRO DE PIÈCE 180184**



**KEY PART  
NO. NO.**

NO.	NO.	DESCRIPTION
1	183497	Case, Lower
2	183498	Case, Upper
3	183499	Gear, 27 Teeth
4	183500	Lever, Clutch
5	183501	Spring, Return
6	183502	Shaft, Input
7	183503	Dog, Movable
8	183504	Dog, Fixed
9	183505	Wire, Formed
10	183506	Bearing, Ball
11	183507	Fork, Shift
12	183508	Seal, Output Shaft
13	183509	Washer
14	183510	Seal, Case
15	183511	Bushing
16	183512	Shaft, Output
17	183513	Screw
18	183514	Seal, Input Shaft
--	183404	Kit, Gearcase Replacement (Includes Instructions)

**DESCRIPTION**

Boîte, Inférieur
Boîte, Supérieur
Engrenage, 27 Dents
Levier d'embrayage
Ressort de Rappel
Arbre d'entrée
Griffe, Amovible
Griffe, Fixe
Fil à Pince
Palier
Fourchette de Changement de Vitesse
Sceau, Arbre de Sortie
Rondelle
Sceau, Boîte
Douille
Arbre de Sortie
Vis
Sceau, Arbre d'entrée
Jeu, Remplacer, Boîte de Vitesse (Y compris le instructions)

**NOTE:** Use Dow Corning #709  
to reseal Gear Case Halves.

**REMARQUE:** Utilizer Dow Corning #709  
pour Sceau les Boîtes.